

# BLOCK

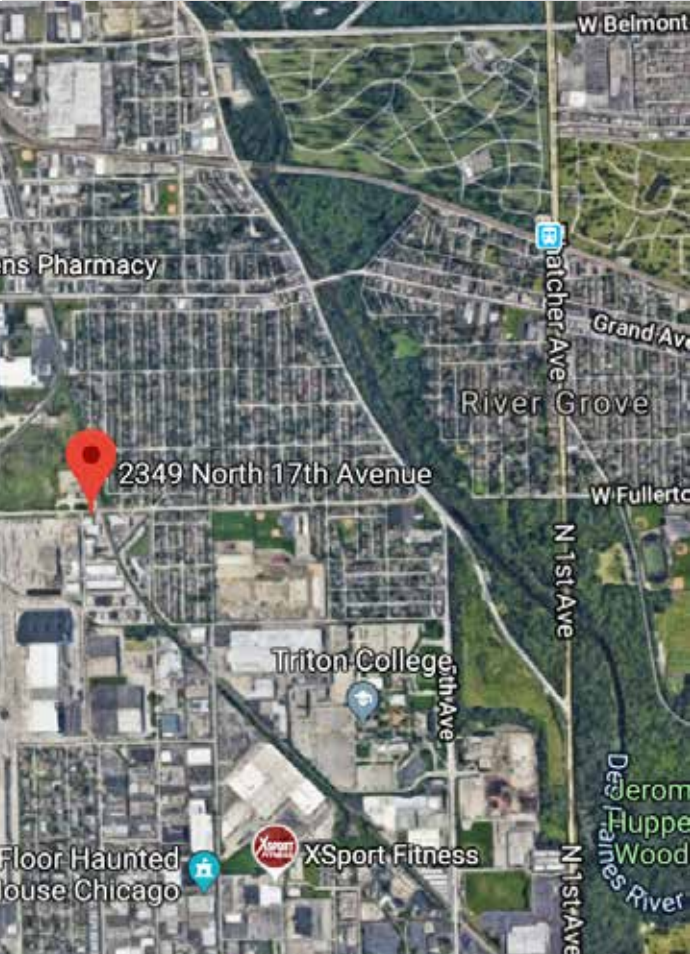
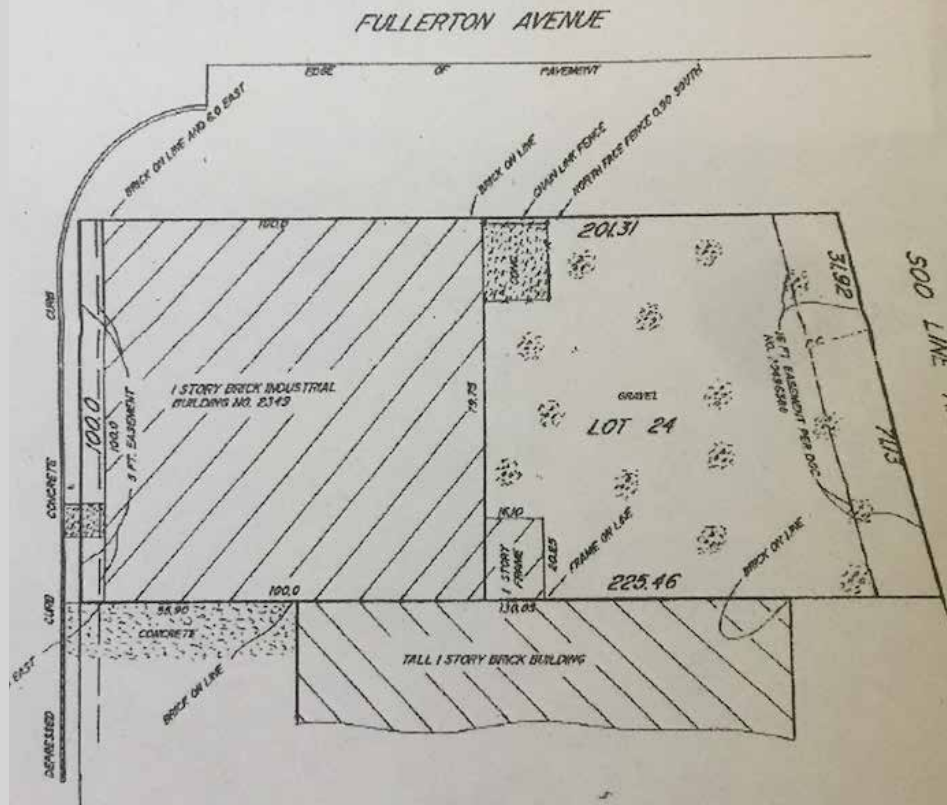
PROPERTY GROUP

A COMMERCIAL REAL ESTATE COMPANY

## COMMERCIAL DEVELOPMENT 10,000 SF CLASS B WAREHOUSE BUILDING

2349 N 17TH STREET  
FRANKLIN PARK, IL

\$399,000 - 10,000 SF



### SUMMARY

Centrally located among commercial and industrial spaces in Franklin Park, the available 10,000 square feet warehouse space was built in 1966 and is situated on 0.54 acres of land.

This is a Class B warehouse space, zoned I-3 for the West Cook Industrial submarket.

Available warehouse space currently designed for one tenant and features 15' ceilings, one loading dock and up to 20 surface parking spots.

### HIGHLIGHTS

- 10,000 SF of Class B Warehouse Building
- 0.54 Acres of Land
- Zoning I-2, Franklin
- 15' Ceiling with 1 Loading Dock
- Parking with 20 Surface Spots

**CONTACT**  
**GREG BLOCK**

(312) 725-9737  
GBlock@BlockPG.com

**PRICE**      **\$399,000**      **10,000 SF**